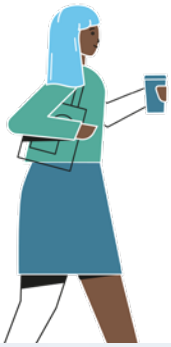




Living Out

How biblically inclusive is your church?

10 statements to help you audit your church family:



- 1 Your church family meetings include people who could be labelled LGBTQI+/ are same-sex attracted.

True False Not Sure
- 2 Derogatory language or stereo-typing attitudes towards anyone would not be tolerated either up-front or in conversation between church family members.

True False Not Sure
- 3 All in your church know that we all experience sexual brokenness and all are being encouraged to confess their own sexual sins.

True False Not Sure
- 4 Same-sex sexual relationships are never mentioned in isolation from other sinful patterns of behaviour, or from the forgiveness offered to all through faith in Christ crucified.

True False Not Sure
- 5 All in your church are hearing the same call to radical self-sacrifice of themselves in response to God's giving of himself in Jesus.

True False Not Sure
- 6 All in your church are encouraged to develop an identity founded first and foremost on their union with Christ.

True False Not Sure
- 7 A godly Christian's sexual orientation would never prevent them from exercising their spiritual gifts or serving in leadership in your church

True False Not Sure
- 8 God's gifts of either singleness or marriage are equally promoted, valued and practically supported in your church family's life together.

True False Not Sure
- 9 Church family members instinctively share meals, homes, holidays, festivals, money, family life with others from different backgrounds and life situations to them.

True False Not Sure
- 10 No-one would be pressurised into expecting or seeking any "healing" or change that God has not promised any of us until the renewal of all things.

True False Not Sure

